



EMERGENCY PLANNING FOR COMMUNITIES

James Krempel

Community Outreach & Volunteer Coordinator

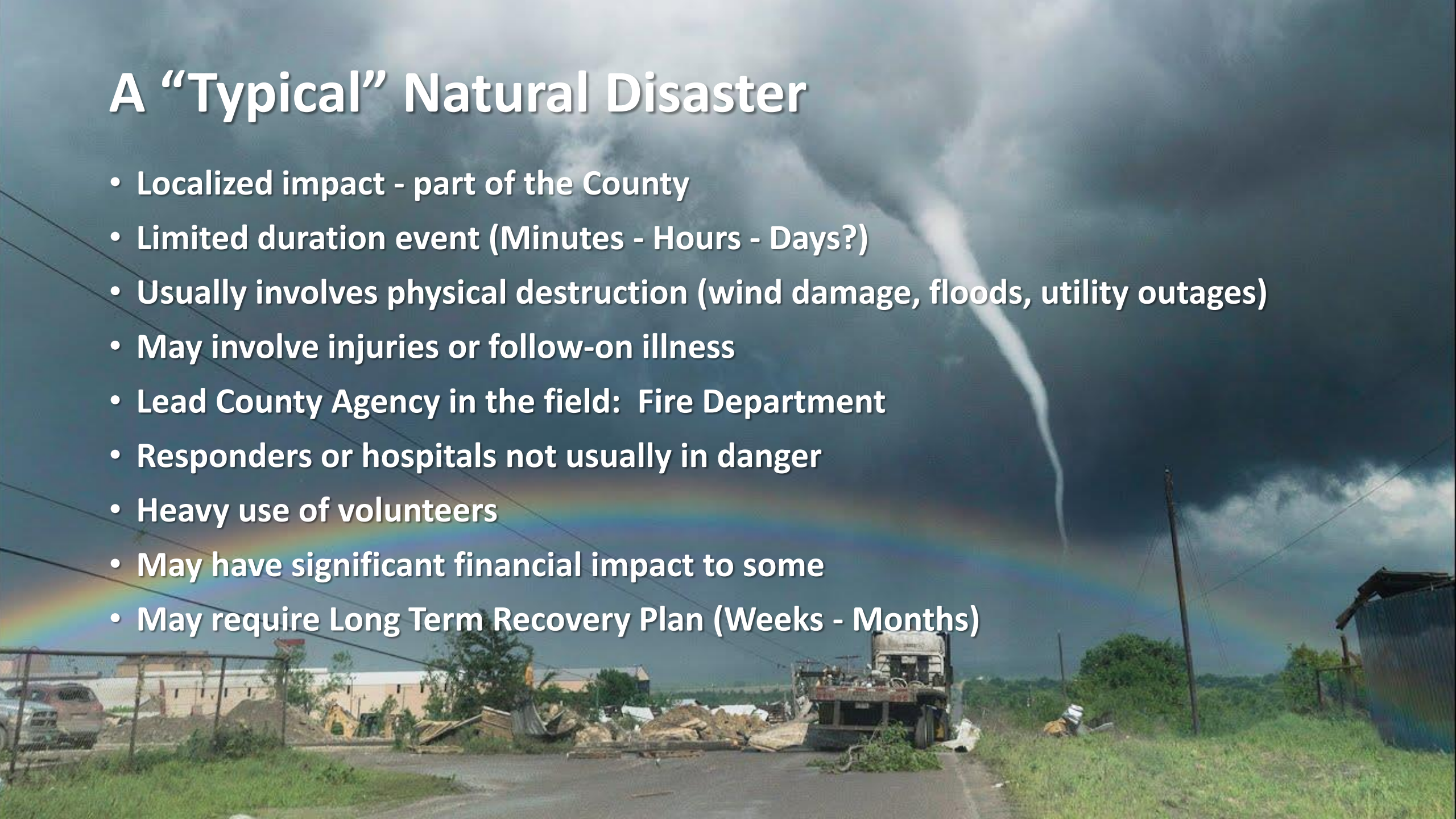
410-222-0600 Main | 410-222-0609 Direct | 410-299-4504 Mobile

emkrem00@aacounty.org or oem@aacounty.org



A “Typical” Natural Disaster

- Localized impact - part of the County
- Limited duration event (Minutes - Hours - Days?)
- Usually involves physical destruction (wind damage, floods, utility outages)
- May involve injuries or follow-on illness
- Lead County Agency in the field: Fire Department
- Responders or hospitals not usually in danger
- Heavy use of volunteers
- May have significant financial impact to some
- May require Long Term Recovery Plan (Weeks - Months)

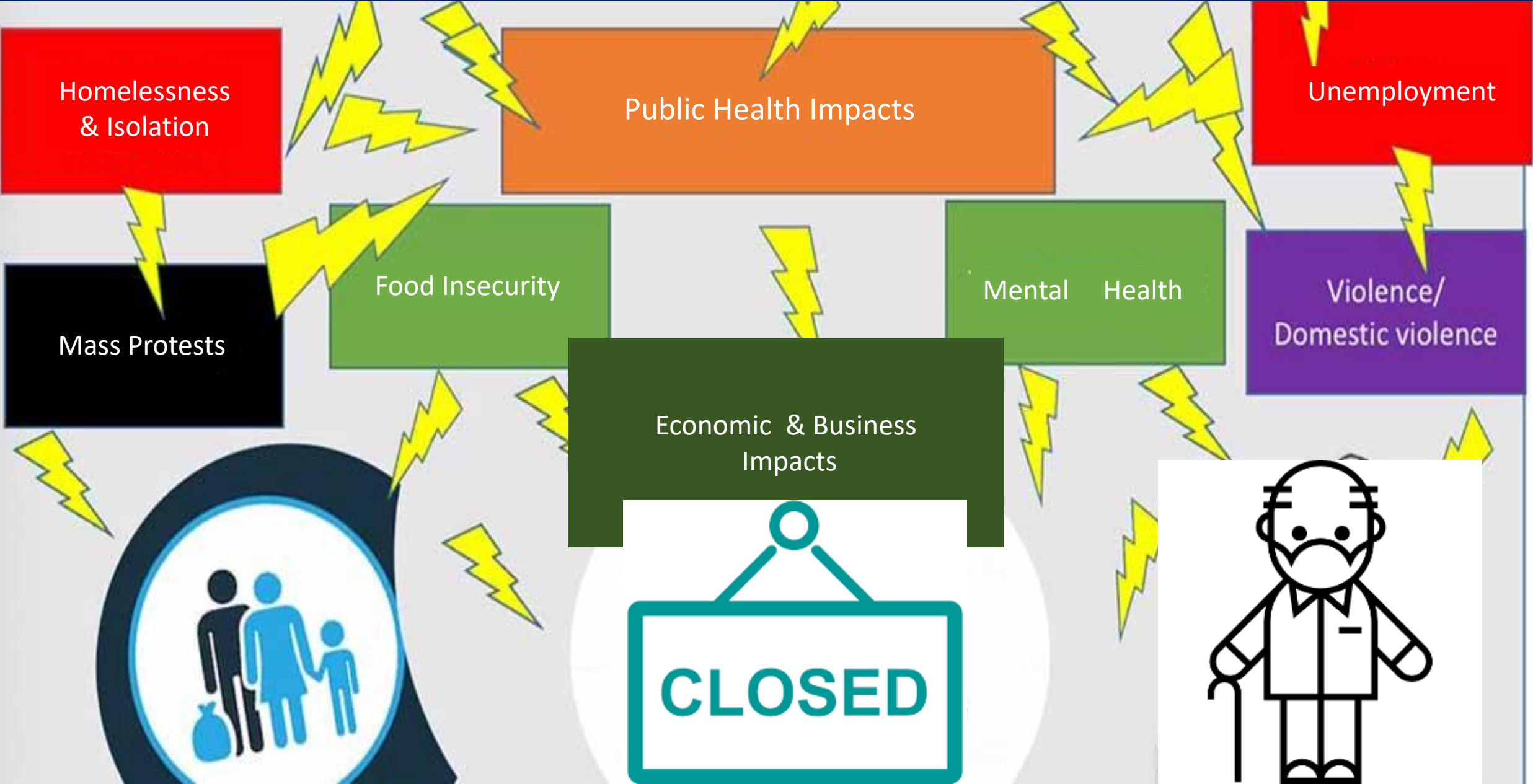


What makes this different?

- Impacts around the globe to your own family
- Unknown duration event (Months? Years?)
- No direct physical destruction
- Novel: new, unknown illness without a vaccine
- Interrupts every part of our normal lives
- Long-term mandatory Public Safety Orders - never done before
- Lead County Agency: Health Department
- Responders and hospitals are in danger themselves
- Selective use of volunteers
- Widespread, catastrophic financial impact
- Long Term Recovery (Months-Years)

COVID-19

COVID PANDEMIC = COMPLEX DISASTER



ANNE ARUNDEL COUNTY PANDEMIC RESPONSE AND RECOVERY



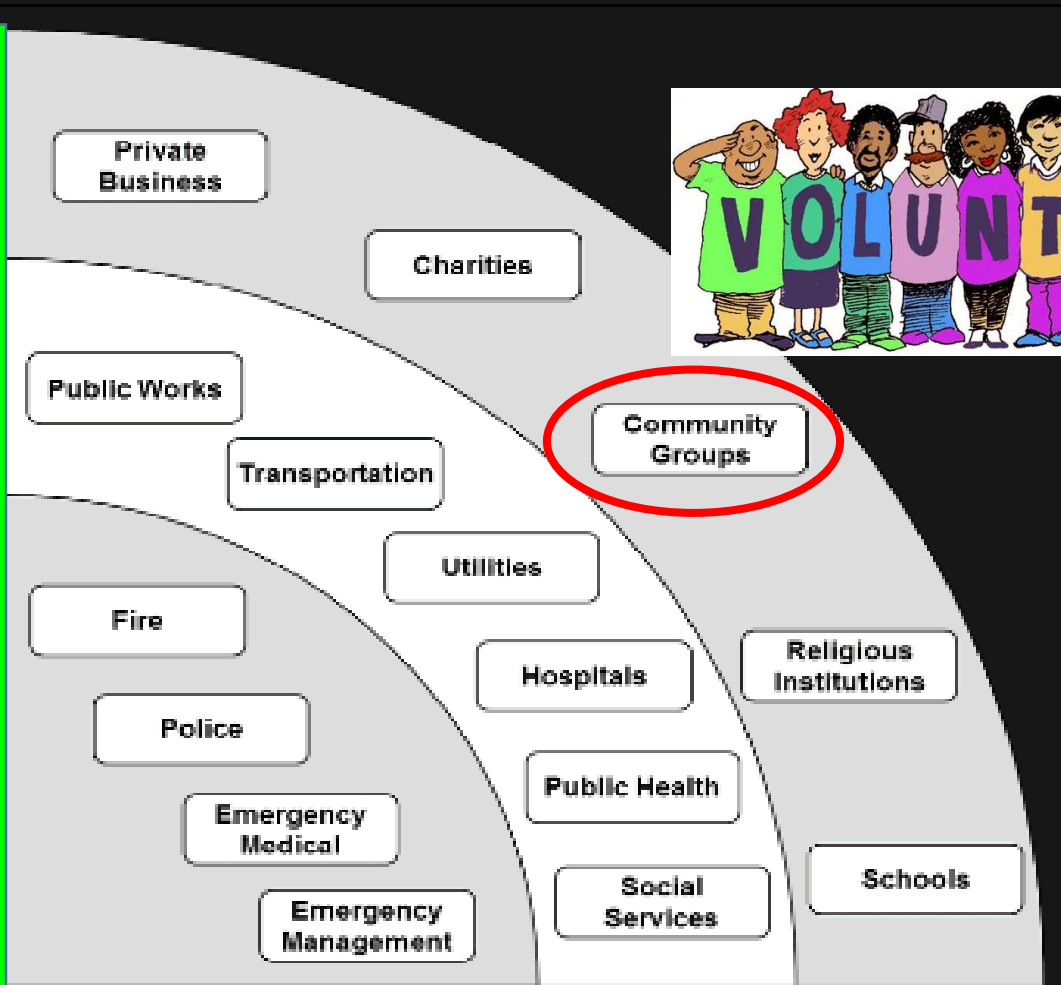
“WHOLE COMMUNITY” RESPONSE AND RECOVERY

“Engage the full capacity of the private and nonprofit sectors, including businesses, faith-based and disability organizations, and the general public, in conjunction with local, state and federal government partners.”

FEMA



**WHOLE
COMMUNITY
PREPAREDNESS**



PANDEMIC “SILVER LINING”



Reassess Priorities

Novel Procedures

Creative Solutions

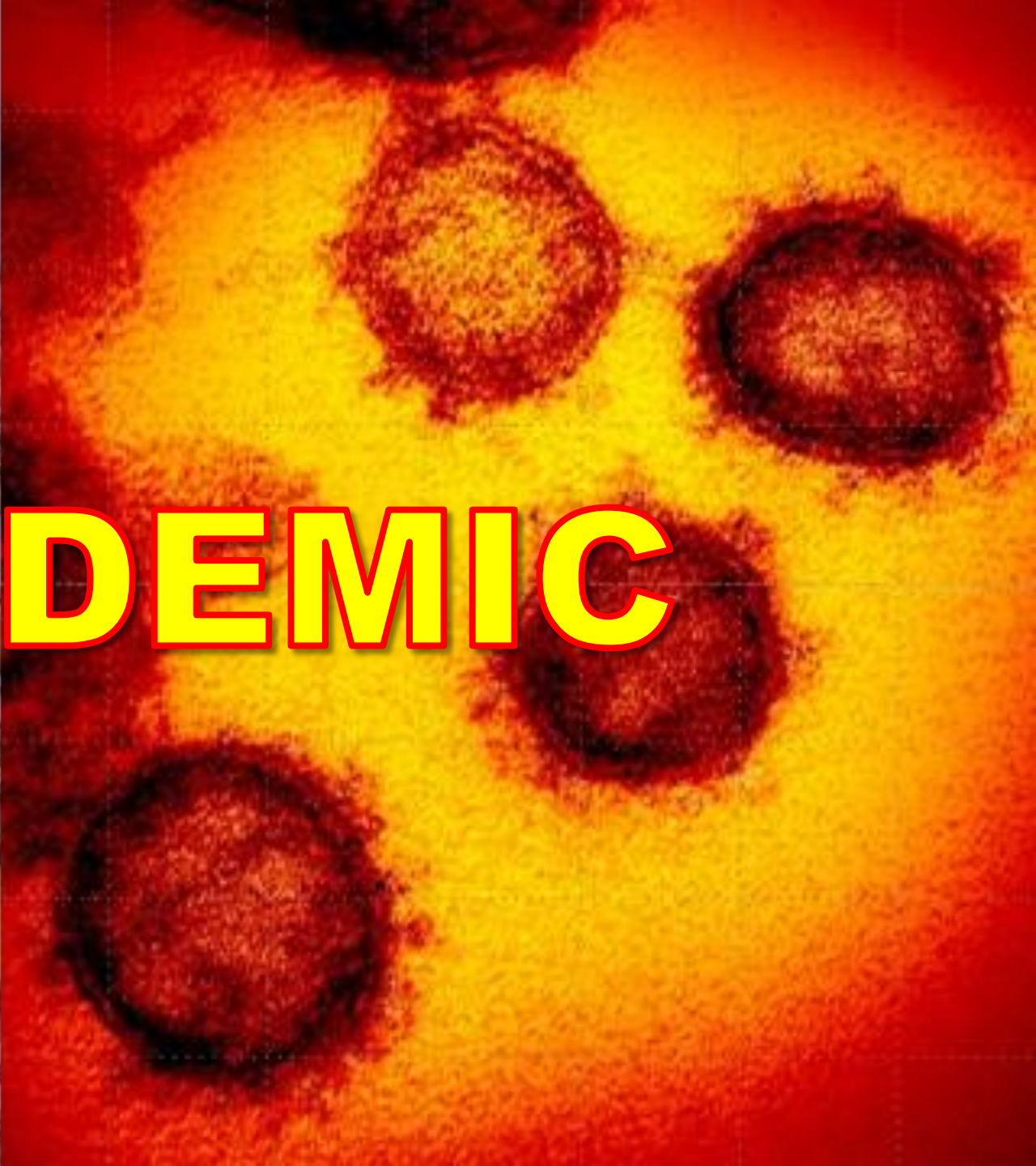
Unexpected Partnerships

New Coalitions

Increased Resilience



HURRICANEDEMIC



SEVERE WEATHER IN MARYLAND

- Heat Waves
- Severe Thunderstorms
 - High Winds
 - Flash/ Area Flooding
 - Dangerous Lightning
 - Trees and Wires Down
 - Tornadoes/Waterspouts
- Tidal/Coastal Flooding
- Tropical Storms/Hurricanes
- Enhanced Fire Threat
- Dense Fog
- Non Thunderstorm Winds
- Winter Weather



UNDERSTANDING WEATHER TERMINOLOGY

Outlooks – A broad discussion of the weather pattern expected across any given area, generally confined to forecast periods beyond 48 hours.







Advisories – A weather hazard that will cause an inconvenience, but is not life threatening if proper precautions are taken.

Watch – Severe weather is possible. Stay tuned to your weather information source for later forecasts.

Warning – Severe weather is likely or already occurring, possibly life threatening.

SEVERE WEATHER OUTLOOK

Understanding Severe Thunderstorm Risk Categories

THUNDERSTORMS (no label)	1 - MARGINAL (MRGL)	2 - SLIGHT (SLGT)	3 - ENHANCED (ENH)	4 - MODERATE (MDT)	5 - HIGH (HIGH)
No severe* thunderstorms expected	Isolated severe thunderstorms possible	Scattered severe storms possible	Numerous severe storms possible	Widespread severe storms likely	Widespread severe storms expected
Lightning/flooding threats exist with <u>all</u> thunderstorms	Limited in duration and/or coverage and/or intensity	Short-lived and/or not widespread, isolated intense storms possible	More persistent and/or widespread, a few intense	Long-lived, widespread and intense	Long-lived, very widespread and particularly intense
					

SEVERE THUNDERSTORM

WIND GUSTS >58 MPH and/or HAIL > 1" DIAM and/or TORNADO
IMPLIES DANGEROUS LIGHTNING and POTENTIAL FOR FLOODING

[More Information](#)

TROPICAL STORMS & HURRICANES



1 Tropical wave

Low pressure spawns showers and storms.



2 Tropical depression

Sustained surface winds less than 39 mph.



3 Tropical storm

Sustained surface winds 39+ mph.



4 Hurricane

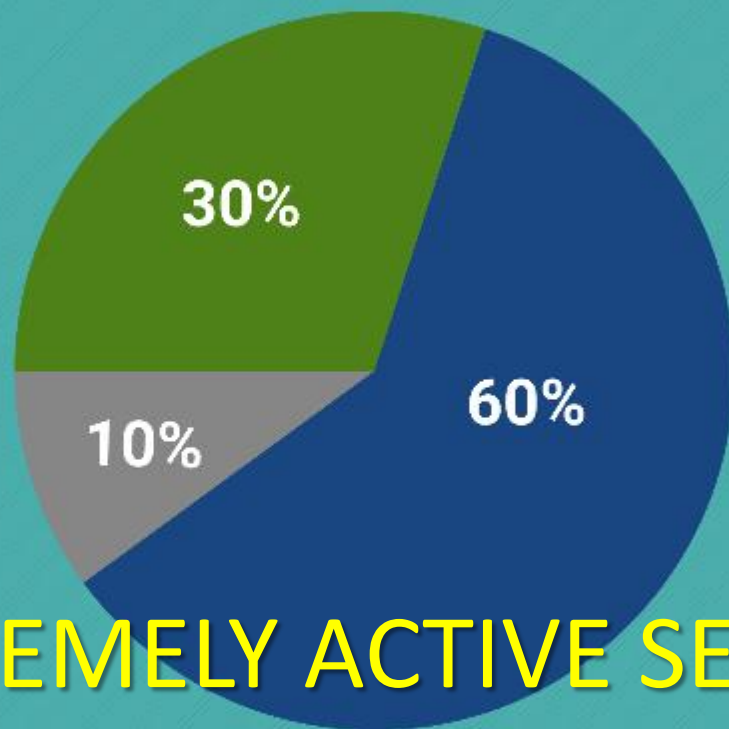
Sustained surface winds 74+ mph.



[More Information](#)



2020 Atlantic Hurricane Season Outlook



“EXTREMELY ACTIVE SEASON”

■ Above-normal ■ Near-normal ■ Below-normal season

Season probability

Named storms

13-19

Hurricanes

6-10

Major hurricanes

3-6



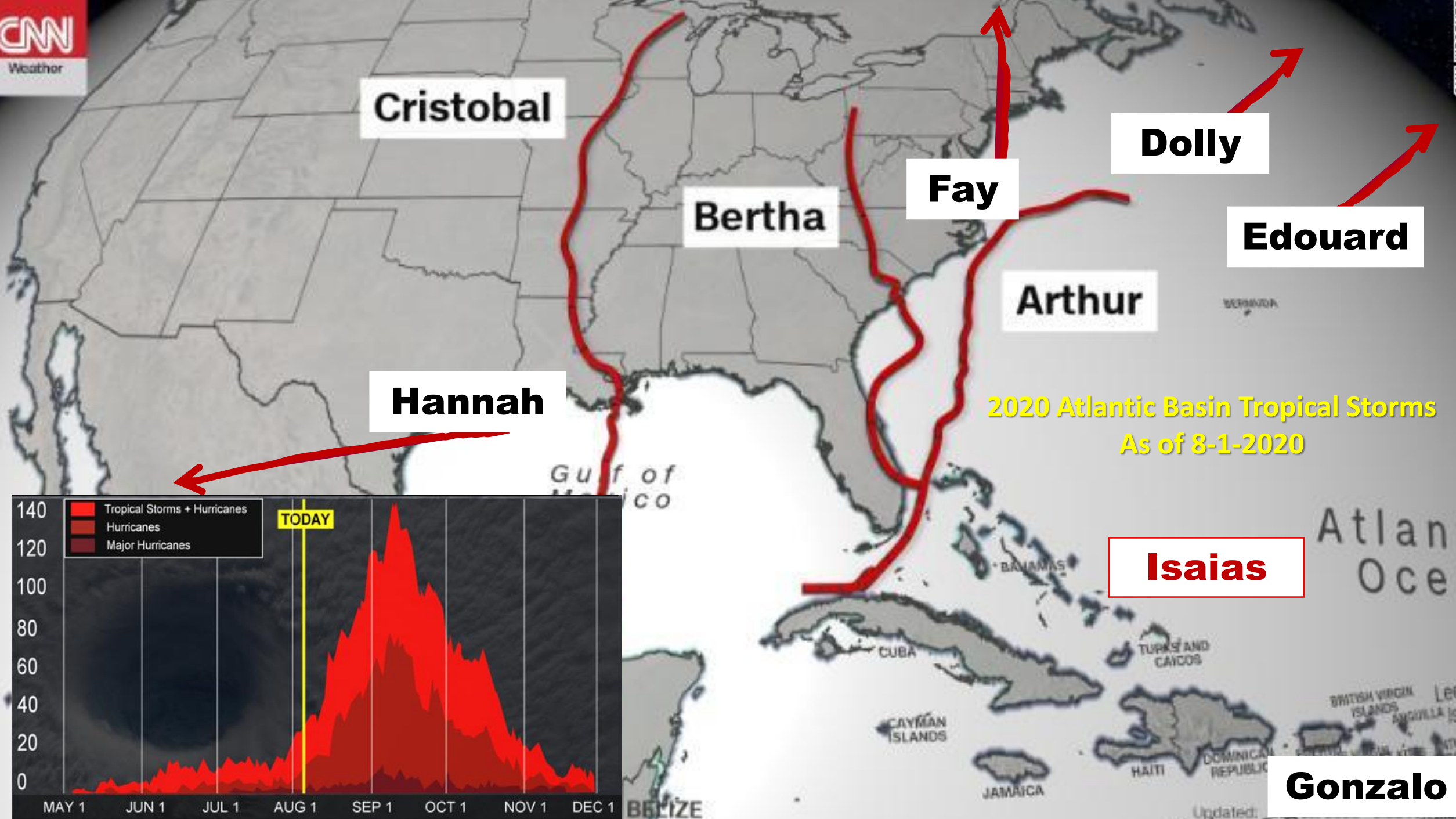
2020 Atlantic Tropical Cyclone Names*

~~Arthur~~
~~Bertha~~
~~Cristobal~~
~~Dolly~~
~~Edouard~~
~~Fay~~
~~Gonzalo~~

~~Hanna~~
~~Isaias~~
~~Josephine~~
Kyle
Laura
Marco
Nana

Omar
Paulette
Rene
Sally
Teddy
Vicky
Wilfred

*Names provided by the World Meteorological Organization



Cristobal

Bertha

Fay

Dolly

Edouard

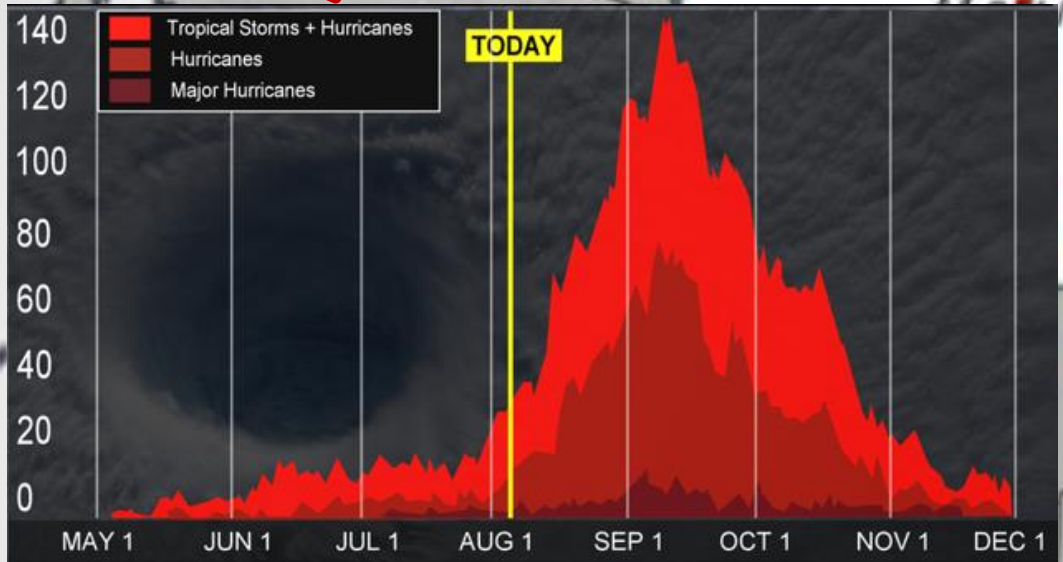
Arthur

Hannah

2020 Atlantic Basin Tropical Storms
As of 8-1-2020

Isaias

Gonzalo



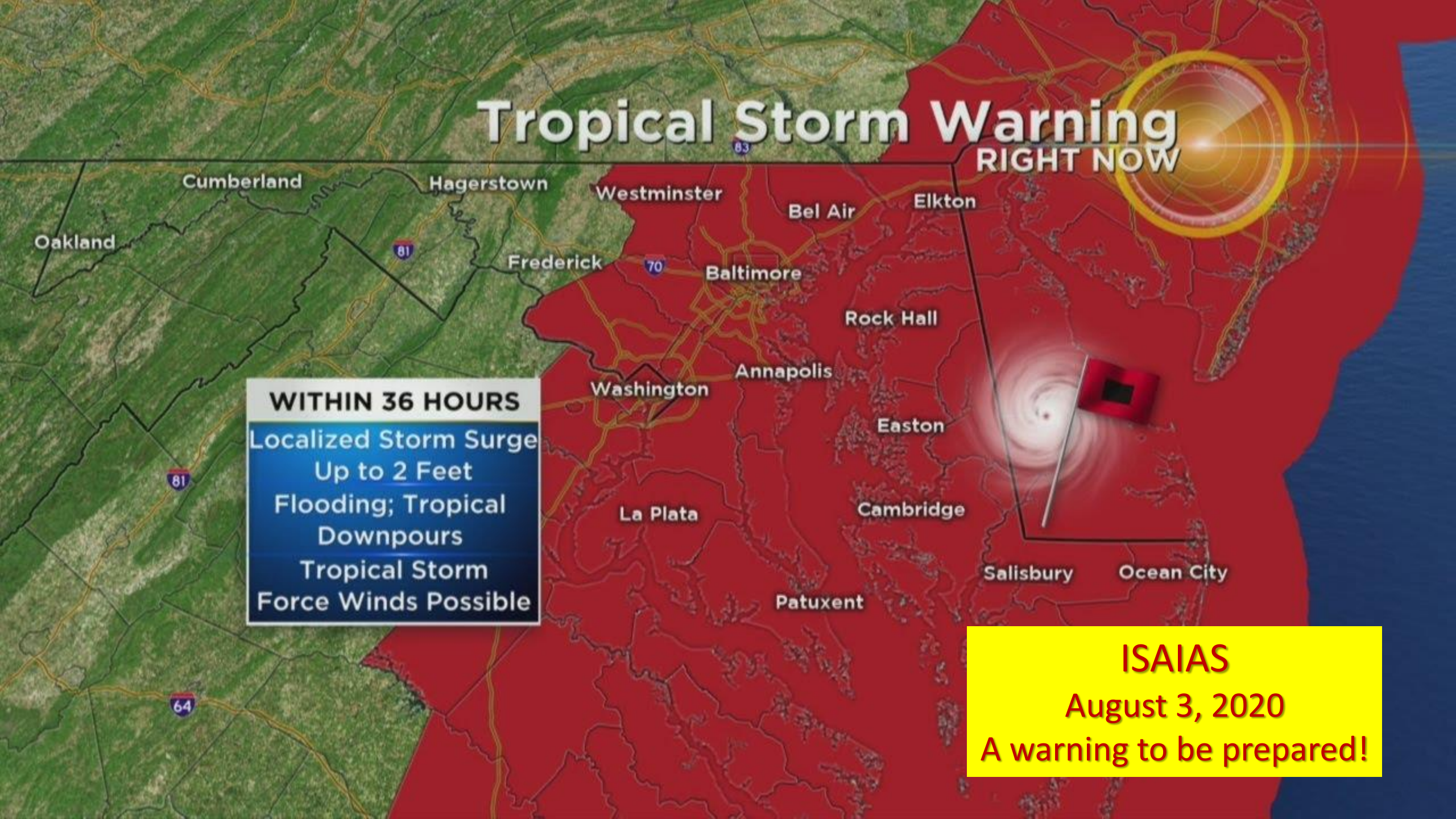
Tropical Storm Warning

RIGHT NOW

WITHIN 36 HOURS


Localized Storm Surge
Up to 2 Feet
Flooding; Tropical
Downpours
Tropical Storm
Force Winds Possible


ISAIAS
August 3, 2020
A warning to be prepared!





HURRICANE HAZARDS


- 1** Storm surge is water pushed ashore by the winds of a tropical cyclone. It has caused more fatalities than any other hurricane hazard.


- 2** Winds from a hurricane are 74 mph or greater and can cause massive damage to buildings and structures in its path.


- 3** Inland flooding is the most frequent cause of tropical cyclone fatalities. It can occur far from the coast and long after landfall.


- 4** Tornadoes are commonly spawned by a hurricane and can cause damage far away from the center of the hurricane.


- 5** Rip currents and waves along and near the coast can be deadly even if the center of the storm passes well offshore.





[More Information](#)

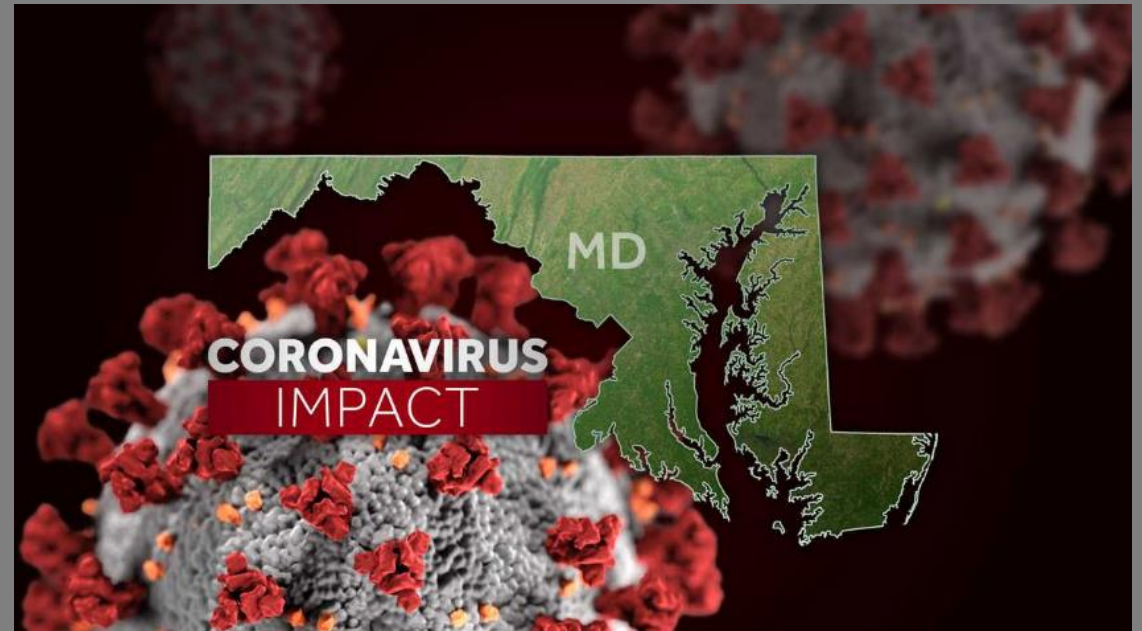


For more Hurricane Safety Information, visit
[weather.gov/hurricanesafety](https://www.weather.gov/hurricanesafety)

“CASCADING EFFECTS”

- Area flooding 10+ ft
- Closed bridges/Impassable roads
- Downed trees/power lines
- Rescue/evacuation difficulties
- Widespread power outages
- Mudslides
- Isolated communities
- Hospital access limited
- Hospitals overwhelmed
- Hospital closures
- Limited communications
- Water & sewer issues
- Standing water health hazards
- Heat illness health hazards
- Food insecurity
- Farm & wild animal problems

PLUS



REALITY CHECK: CONDITIONS YOU CAN'T CONTROL

In making an emergency plan, you should assume:

- The Covid-19 Pandemic will continue through 2020
- Emergency services and hospitals may be overwhelmed
- No power
- No water
- No heating or cooling
- Difficult communications including phone, Internet, Wi-Fi
- Limited or no access to money using credit cards or ATMs
- Limited or no access to retail: including pharmacies, grocery stores, and gas stations
- Limited or no access to suppliers and repair companies
- No mail or package delivery
- No trash or recycling service
- No outside help

Your basic assumption: Prepare to be self-sufficient for two weeks or longer

FIRST THINGS FIRST



First
protect
YOURSELF

Then
secure your
FAMILY

Then
check your
NEIGHBORS

Then
serve your
COMMUNITY

COVID ERA SELF-CHECK

Have you been exposed to Covid-positive individuals?

Are you feeling ill?

Do you have Covid-19 symptoms?

Have you been tested?

Are you over age 60?

Do you have a chronic health condition?

- Heart condition
- Respiratory condition
- Diabetes
- Cancer
- Immuno-compromised

Are you helping to slow the spread?

Are you prepared to support your family?

Are you willing to support your neighbors?

Know the symptoms of COVID-19, which can include the following:



Symptoms can range from mild to severe illness, and appear 2-14 days after you are exposed to the virus that causes COVID-19.

HELP SLOW THE SPREAD!



GET TESTED if symptomatic or exposed

Get a seasonal **FLU SHOT** in the Fall

COVID-19 Health Line
410-222-7256

Monday - Friday 8:00 a.m. - 6:00 p.m.
Saturday 10 a.m. - 4 p.m.
Sunday CLOSED
Email covid19info@aacounty.org



Stay at least 6 feet
(about 2 arms' length)
from other people.



Cover your cough or sneeze with a
tissue, then throw the tissue in the
trash and wash your hands.



When in public, wear a
cloth face covering over
your nose and mouth.



Do not touch your
eyes, nose, and mouth.



Clean and disinfect
frequently touched
objects and surfaces.



Stay home when you are sick,
except to get medical care.



Wash your hands often with soap
and water for at least 20 seconds.

HELP SLOW THE SPREAD!



THESE MASKED CHARACTERS ARE PHYSICALLY DISTANCING BECAUSE THEY LOVE THEIR COMMUNITY!



**COVID-19 WEAR A MASK OR FACE COVERING
IT'S A PUBLIC SAFETY ORDER!**

WHY YOU SHOULD WEAR A FACE MASK:

- ✓ COVID-19 can be spread by people who are not showing symptoms; face coverings (with physical distancing and hand washing) can prevent the spread of the virus.
- ✓ Covering your face is about helping others. By covering your face, you are helping to slow the spread of COVID-19.



PLEASE BE RESPECTFUL OF YOUR FELLOW RESIDENTS!

WHO SHOULD NOT WEAR a MASK:

- ✓ Children under age 2
- ✓ People with disabilities who are unable to wear a mask are provided reasonable accommodations per the Americans with Disabilities Act

WHEN TO WEAR A FACE COVERING:

- ✓ In retail or business establishments
- ✓ In public for activities outside of your home
- ✓ Around family if you aren't feeling well
- ✓ On public transit
- ✓ If you are caring for someone with symptoms of COVID

FACE COVERINGS SHOULD:

- ✓ fit snugly but comfortably against the face
- ✓ include multiple layers of fabric
- ✓ allow for breathing without restriction
- ✓ cloth face masks should be washed regularly

COMMUNITY EMERGENCY PLANNING



Guide to Emergency Planning for Communities



Anne Arundel County Office of Emergency Management

Appendix A

Guide to Emergency Planning for Communities: Household and Pet Emergency Plan Templates



Anne Arundel County Office of Emergency Management

Appendix B

Guide to Emergency Planning for Communities: Community Survey



Anne Arundel County Office of Emergency Management

Appendix C

Guide to Emergency Planning for Communities: Community Emergency Plan Template



Anne Arundel County Office of Emergency Management

[CLICK HERE](#)
TO LEARN MORE

FIRST IDENTIFY THE POTENTIAL HAZARDS

POTENTIAL HAZARDS TO YOUR COMMUNITY

Fire	Medical Incidents	Safety Issues	Cyber Attack	Power Outage	Criminal Activity	Active Shooter	Floods	Epidemic
------	-------------------	---------------	--------------	--------------	-------------------	----------------	--------	----------

**“ALL-HAZARDS”
PLANNING**

POTENTIAL HAZARDS TO OUR COUNTY

**PROBABILITY
VS
IMPACT**

NATURAL HAZARDS	MAN-MADE HAZARDS	
	INTENTIONAL	TECHNOLOGICAL
<ul style="list-style-type: none"> ✓ Earthquake ✓ Epidemic/Pandemic ✓ Flood ✓ Hurricane/Tropical Storm ✓ Lightning ✓ Severe Winter Storm ✓ Tornado/Wind Storm 	<ul style="list-style-type: none"> ✓ Active Assailant Biological Attack Chemical Attack ✓ Civil Unrest ✓ Cyber Attack ✓ Explosions Nuclear Blast Radiological Attack 	<ul style="list-style-type: none"> ✓ Hazardous Materials Fixed Nuclear Facilities Infrastructure Failure ✓ Major Structural Fire ✓ Utility Disruption ✓ Transportation Hazards

THEN IDENTIFY THE RISKS TO YOUR COMMUNITY

What risks does your community face? How likely they are to occur? If they occur, what would their impact be?

Focus on risks which: Are most likely to impact your community and you can do something about.

ENVIRONMENTAL RISKS

- Areas that are subject to flooding and/or flood regularly
- Frequently isolated by snow events
- Subject to mudslides
- Sites of environmental and/or historic importance which may be impacted

INFRASTRUCTURE RISKS

- Peninsulas with single access roads
- Bridges or main roads which are frequently damaged, subject to flooding, and/or closure
- Major transportation facility (such as a train station) in the immediate area
- Large industrial facilities in the area
- Hazardous materials plants in the area
- Dams or lakes in the area



**PROBABILITY
VS
IMPACT**

IDENTIFY THE RISKS TO YOUR COMMUNITY

SOCIAL RISKS

Known vulnerable community members/groups in your community:

- Live alone, such as older adults
- Recovering from a recent operation
- Without access to transportation
- Access and functional needs: limited mobility, sight/hearing impairment, developmental disability, or chronic illness
- Reliant on regular medication or medical treatments (i.e. dialysis or chemotherapy) or medical equipment
- Language or cognitive barriers who may have trouble understanding emergency alerts, messaging, and guidance
- Commercial or nonprofit group-residences in your community
- Community members/groups who do not live in the area full-time?
- Pockets of high criminal activity
- Live at or below the poverty line
- Experiencing homelessness

**PROBABILITY
VS
IMPACT**



FORM AN EMERGENCY PLANNING TEAM

✓ **Designate a Planning Team Leader = Community Emergency Manager**

✓ **Seek knowledgeable volunteers**

- **First Responders** (Police, Fire, EMS, Public Works)
- **Medical Professionals** (Doctor, Nurse, PA, Paramedic)
- **Military Members** (Active Duty, Retired, Reserve, National Guard)
- **Property Insurance Specialists**
- **Engineers/Facility Managers**
- **Local Historians**
- **IT Specialists/Webmasters**
- **Building Contractors and Skilled Trades**
- **Attorneys**
- **Foreign Language Speakers**
- **Trained Weather Spotters/ Weather Buffs**
- **Amateur Radio Operators**

COMMUNITY RESOURCES SURVEY



✓ **Does your community have disaster relief organization support (Church, CERT, Red Cross, etc)?**

✓ **Coordinate with County Agencies (Emergency Management, Police, Fire, Health Department)**

GET PREPARED

KNOW THE RISKS natural disasters, manmade emergencies, Covid-19 pandemic

STAY INFORMED

PREPARE YOUR HOME

FAMILY SPECIAL NEEDS

SHELTER-IN-PLACE for at least three days...up to two weeks

SAFETY IN NUMBERS do not face the storm alone

FAMILY COMMUNICATIONS PLAN

EMERGENCY FINANCIAL FIRST AID KIT

ARE YOU IN AN EVACUATION ZONE ?

EVACUATION ROUTES and DESTINATIONS

EMERGENCY NETWORK family, neighbors, etc

PETS



WHO IS IN CHARGE WHEN YOU ARE NOT HOME?

A dramatic sky with dark, heavy clouds and several bright white lightning bolts striking down. Below the sky is a calm body of water with a dark, silhouetted shoreline in the distance. The overall mood is ominous and powerful.

Staying Ahead of the Storms

Staying Informed

LOCAL NEWS AND WEATHER

Television

- WBAL
- WMAR
- WJZ
- WBFF
- AACo Community TV



Radio

- WBAL 1090 AM
- WNAV 1430 AM
- WYRE 810 AM
- WYPR 88.1 FM
- WTOP 103.5 FM
- WFSI El Zol 107.9 FM

SOCIAL MEDIA

OEM Website: www.aacounty.org/OEM

Health Website: www.aahealth.org/covid19/

▶ **Facebook:** Anne Arundel County Office of Emergency Management



▶ **Twitter:** aaco_oem



▶ **Instagram:** annearundel_oem



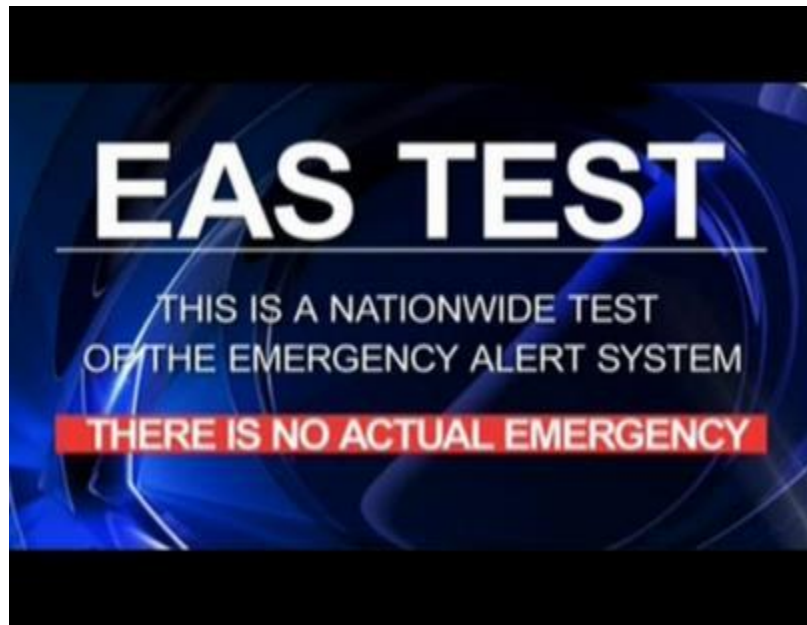
▶ **Nextdoor:** Anne Arundel County Office of Emergency Management



INTEGRATED PUBLIC ALERT & WARNING SYSTEM (IPAWS)

Emergency Alert System (EAS)

- The national public warning system
- Also used by state & local authorities to deliver important emergency information
- Alerts to radio, TV, cable, satellite broadcasters, NOAA Weather Radio



Wireless Emergency Alerts (WEA)

- Sent via the cellular system
- Mostly used by the State
- Look like text messages, but are designed to get your attention & alert you with a unique sound & vibration
- Issued for three categories



NOAA WEATHER RADIO

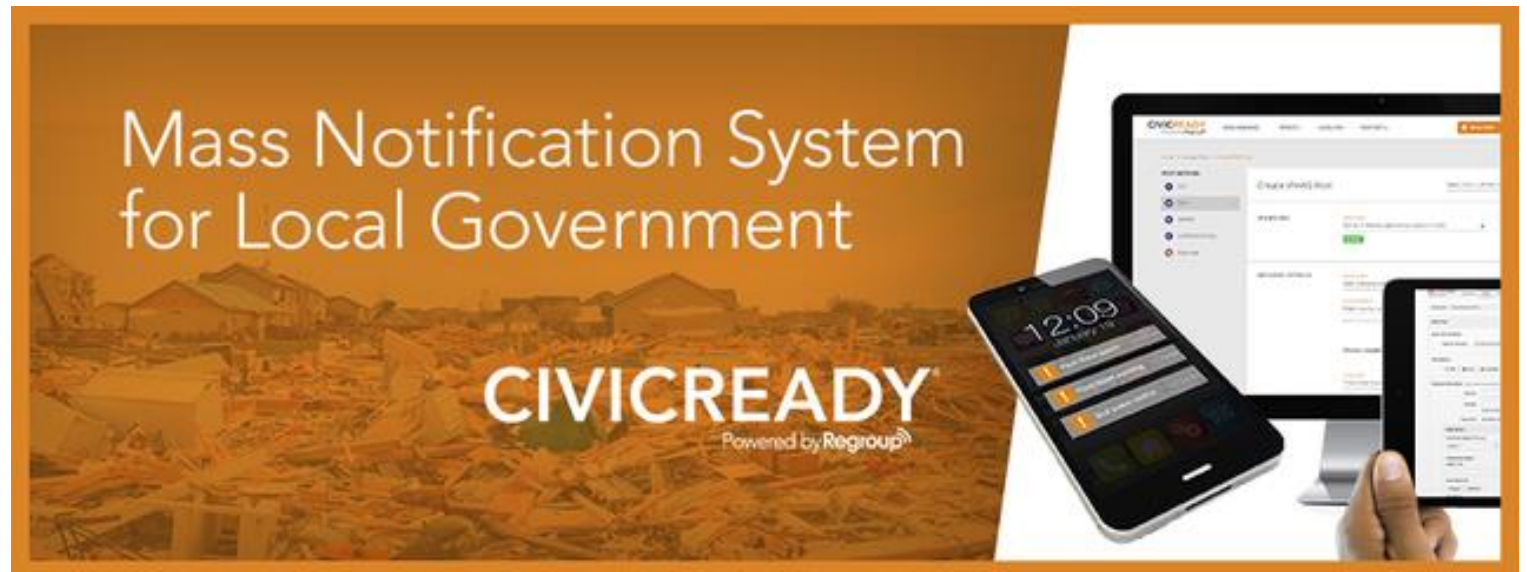
- Managed by National Weather Service
- Current weather conditions broadcast 24/7
- Alert features for Watches and Warnings
- Used as part of State and Federal **Emergency Alert System (EAS)**
- Can be triggered only for Anne Arundel County
 - Specific Area Messaging Encoding (S.A.M.E.)
 - **162.400** MHz SAME **Code 024003**
- Inexpensive receivers readily available
- Assistive technology available

Learn more [here](#)



CIVICREADY© MASS NOTIFICATION SYSTEM

- **Alert Anne Arundel**
- Designed to send general and/or emergency notifications
- Sends notifications via text messages, emails, and landlines
- Multiple options, including several languages
- Sign up by visiting, <http://alertannearundel.civicready.com/>



PREPARE YOUR HOME



CLICK [HERE](#)
TO LEARN MORE

PLAN AHEAD OF THE STORM FOR YOUR FAMILY'S SPECIAL NEEDS

- Plan ahead with your family, friend, or caregiver
- People with chronic illness may be at greater risk of COVID-19
- People with disabilities must plan carefully and early
- Do not shelter alone – have a support network
- Home healthcare services may be interrupted
- Have a month of prescription medications on hand
- Have spare medical devices available – hearing aids, glasses, walker, etc
- If you use electrical powered medical devices – have a generator or relocate
- Have additional supplemental oxygen, if needed
- Have assistive technology if needed – with spare batteries
- Call ahead about urgent scheduled medical appointments – dialysis/chemotherapy
- Special transportation needs, including evacuation
- Plan for your Service Animal



CLICK [HERE](#)
TO LEARN MORE

FAMILY COMMUNICATIONS PLAN

Make a Written Communications Plan

- Family
- Trusted Friends
- Trusted Neighbors
- Work and School Contacts
- Other Important Numbers

Out of Area (or State) “Family Switchboard Operator”

- Relative
- Trusted Friend

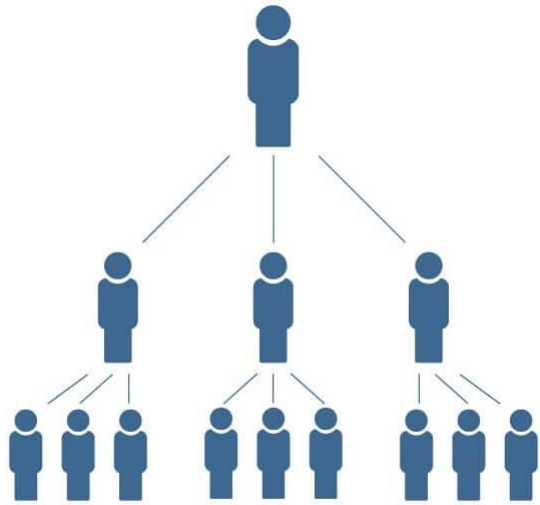
Text is more reliable

1. **Who** you are
2. **Where** you are
3. **Status**

CLICK [HERE](#)
TO LEARN MORE



COMMUNITY CONTACT LIST



Manual Call Tree

- Email
- Social Media
- Telephone/Text
- Walkie Talkie
- Amateur (Ham) Radio
- Runners/Bicycle

YOUR COMMUNITY COMMUNICATIONS PLAN

- Pass information or instructions
- Coordinate training
- Coordinate response
- Coordinate recovery

INCLUDES

- Emergency Committee
- Residents
- Volunteers
- Outside Agencies

WHAT is happening and/or required

WHO is involved or needs assistance

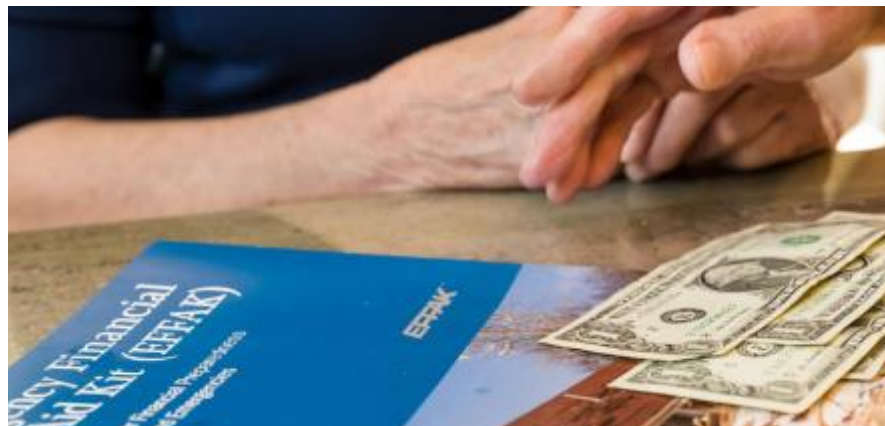
WHEN did the incident happen or date/time the group will meet

WHERE did the incident happen or location the group will meet; and provide

SPECIFIC INSTRUCTIONS such as resource needs, tools, personal protective equipment (PPE), etc

FINANCIAL PREPAREDNESS

- ✓ **Gather financial and critical personal, household, and medical information**
Secure the information physically and digitally
- ✓ **Consider saving money in an emergency savings account that could be used in any crisis**
Keep a small amount of cash at home in a safe place
ATMs and credit cards may not work during a disaster
- ✓ **Obtain property, health, and life insurance if you do not have them**
Review your policy amount and types of coverage
You may need to purchase flood insurance from the [National Flood Insurance Program](#)
Inventory and take pictures of your property before an emergency
- ✓ **Download the [Emergency Financial First Aid Kit \(EFFAK\)](#) to get started planning today**
- ✓ **Download the Maryland Insurance Administration [Natural Disaster Preparedness Guide](#)**



NATIONAL FLOOD INSURANCE PROGRAM



Is your home in a Flood Plain?

**Do you need National Flood Insurance?
(Must be in place 30 days before flood damage)**

For tips for before/during/after a flood visit:

<https://www.fema.gov/national-flood-insurance-program>

EVACUATION CONSIDERATIONS



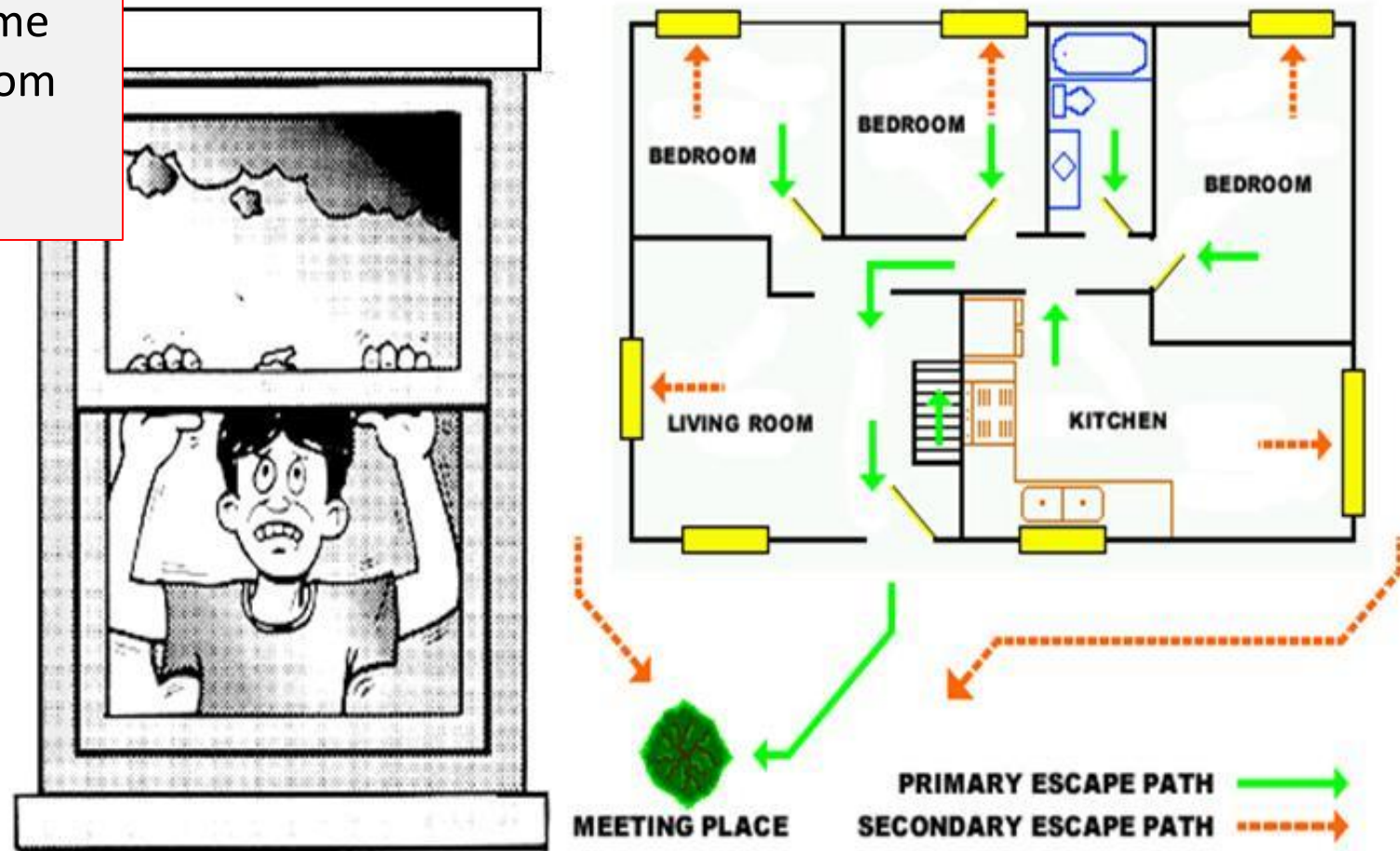
EVACUATION PLANNING BEGINS AT HOME

1. Sleep with bedroom doors closed
2. At least two smoke detectors in your home
3. Have a plan for two exits out of every room
4. Have an outside meeting place
5. Practice. Practice. Practice.

Plan for any access or functional needs!

CLICK [HERE](#)
TO LEARN MORE

Plan Your Escape!



KNOW YOUR POTENTIAL EVACUATION ZONE!

Know Your Zone



It's as easy as **A-B-C**

What Is It?

New color-coded interactive map you can use to determine which **potential storm evacuation zone** your home or business may be in based on your street address.

How Will It Help You?

Knowing your zone will help you avoid unnecessary evacuation travel, thereby reducing highway congestion, easing overcrowding at local storm shelters, and boosting public safety.

How Do You Use It?

Simply enter your address and view a color-coded map showing the evacuation zone (**A** or **B** for Anne Arundel County).

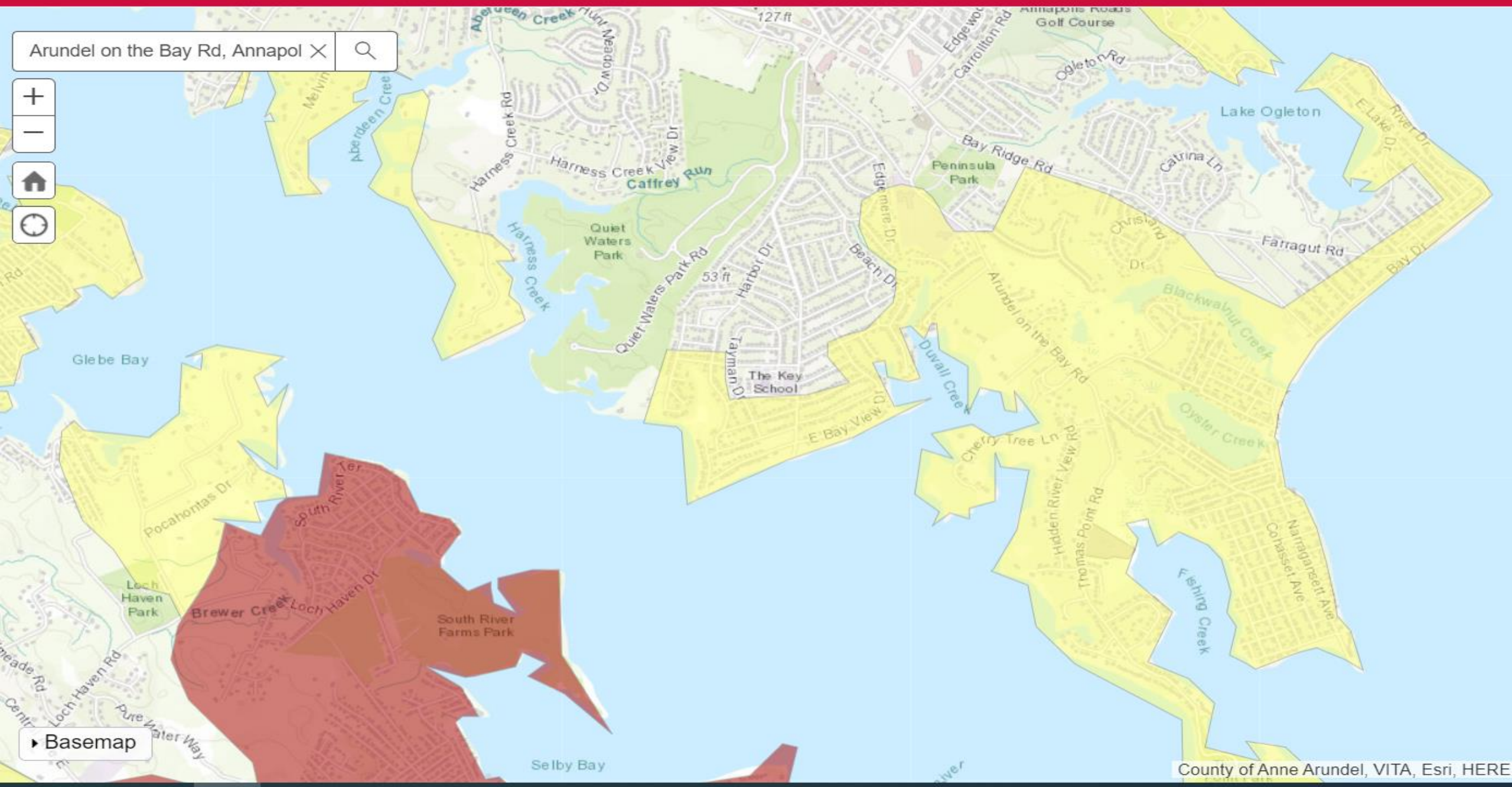
OEM will notify residents of impacted zones what they should do to stay safe, depending on expected storm conditions.

What if you aren't in a Zone?

If your address is not in a potential evacuation zone, you are not expected to be evacuated during tropical storms. Stay informed by radio, TV, and social media.

www.KnowYourZoneMd.com

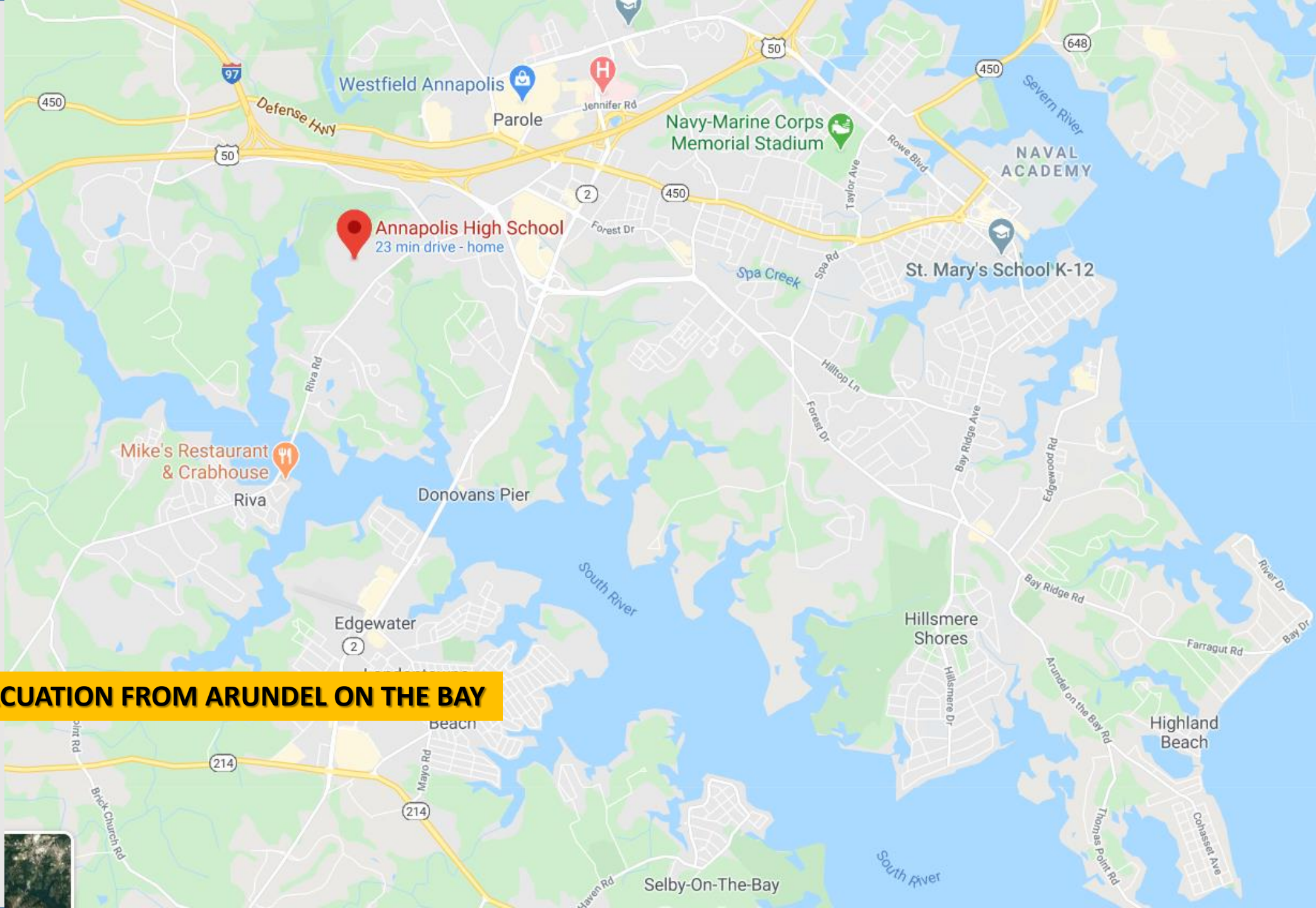
Maryland Hurricane Evacuation Lookup Tool



Arundel on the Bay Rd, Annapol X

- +
-
- Home
- Refresh

Basemap



EVACUATION FROM ARUNDEL ON THE BAY



SHELTER-IN-PLACE OR EVACUATE?

- Know whether you are in a designated Evacuation Zone [KnowYourZoneMd](#)
- Follow evacuation guidance (areas, timelines, routes) from local officials
- Plan for your entire household, including pets
- Keep your gas tank at least half full
- Pack a “Go Bag” of evacuation supplies and critical documents
- Travel during daylight hours if possible
- Have an out-of-state emergency contact
- Have an idea as to where you will evacuate along designated emergency routes
- Confirm your destination (or shelter) will accept pets
- Know where you will meet up with family members or trusted friends
- Special considerations for COVID-19 quarantine or isolation



Once tropical storm winds have arrived it is generally safer to shelter-in-place!

CLICK [HERE](#)
TO LEARN MORE

EVACUATION CONSIDERATIONS

- Plan for **early voluntary evacuation** if you
 - ✓ Live alone and have a disability or chronic illness
 - ✓ Use electrically-powered lifesaving equipment and have no generator
 - ✓ Live in a mobile home or prefabricated structure
 - ✓ **Live on a low-lying peninsula, especially with only a single route out**

Some communities may only have two realistic options:

- Leave early or weather the storm

Considerations for residents with special needs:

- Medical or assistive devices
- When they should leave
- What do they bring
- Where to they go
- How do they travel
- With whom do they travel



FAMILY EMERGENCY KIT

- ✓ **Water:** One gallon of water per person per day for at least three days
- ✓ **Food:** At least a three-day supply of non-perishable food (including pets)
- ✓ Baby/infant supplied and food, if applicable
- ✓ Battery-powered or hand-crank radio and extra batteries
- ✓ Flashlight or headlamp with extra batteries
- ✓ Family First Aid Kit
- ✓ **Face Coverings (two surgical or cloth masks); surgical gloves**
- ✓ Personal Hygiene/Sanitization items, garbage bags; extra TP
- ✓ Prescription Medicine (**one month's worth**)
- ✓ Medical devices (glasses, hearing aids, etc)
- ✓ Photo identification; Important family documents in waterproof bag
- ✓ Whistle to signal for help
- ✓ Cell phone with charger
- ✓ Manual can opener for canned food
- ✓ Wrench or pliers to turn off utilities, if required
- ✓ Paper local road maps for evacuation
- ✓ Cash or Travelers Checks



TWO WEEKS

**SELF-SUFFICIENT
FOR AT LEAST THREE DAYS**

PET PREPAREDNESS

What is in your Pet Preparedness Kit

A significant number of families have pets and they need to be ready for a disaster too. Below are items to have ready to go in your pet emergency kit.

What Goes in Your Pet Emergency Kit:



Food and water (3 days) bowls, manual can opener



Medicines, medical records, and first aid kit



Collar with ID tag, harness, or leash (include backups)



Crate or pet carrier



A picture of you and your pet together



Important documents: registration & vaccination



Familiar items: favorite toys, treats, and bedding



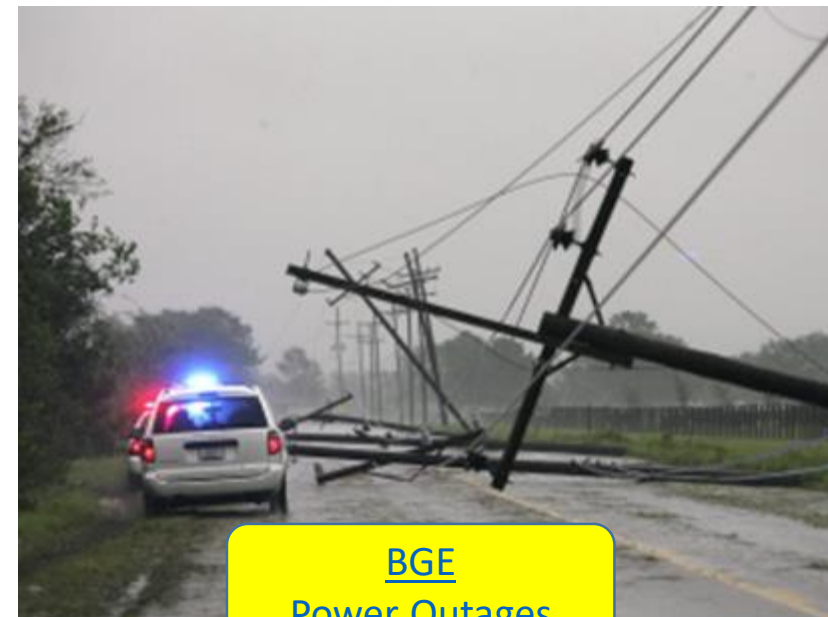
Plastic bags/litter for cleaning up after your pet



CLICK [HERE](#)
TO LEARN MORE

WHEN THE POWER GOES OUT

- **Notify BGE of neighborhood outage: 877-888-2222**
- **Use flashlights (or battery powered lanterns) extra batteries**
 - **Do not use candles – creates an additional hazard**
- **Charge cell phones and a radio with rechargeable batteries**
- **Refrigerators/freezers at maximum cold; keep doors closed**
 - **Perishable food in closed refrigerator = 4 hours**
 - **Perishable food in closed freezer = 2 days**
- **Plan ahead for electrically-powered medical equipment**
- **Never burn charcoal, use gasoline machinery, or propane-powered stoves your home**
- **Home Generator: properly installed, fueled, and located in an area safe to operate**
- **When power is restored, wait several minutes before turning on appliances and electronics**
- **Keep your car's gas tank full...gas station pumps may not operate in an outage**



[BGE](#)
Power Outages

INSURANCE CONSIDERATIONS: AFTER A DISASTER

- If you have evacuated, do not return home until authorities have declared the area safe!
- Make your own property damage assessment
- Contact your insurer if you have property or auto damage
 - If you have temporarily relocated, provide address and contact information
- Take photos/video of damaged property to support your claim
 - When you can, make a detailed inventory of damaged property
- Before removing damaged property, have an insurance claims adjuster assessment
 - If possible, be present during the assessment
- Make only temporary repairs to prevent further damage
 - Save all receipts for repairs and temporary living expenses
- Beware of unscrupulous insurance or repair scams
- You may be eligible for FEMA Individual Assistance in a declared emergency
- For more information for home or business owners:
 - www.insurance.md.gov *Insurance Preparedness Guide for Natural Disasters*
 - Maryland insurance fraud/complaint line: 410-468-2340 or toll free at 800-492-6116, ext 2340



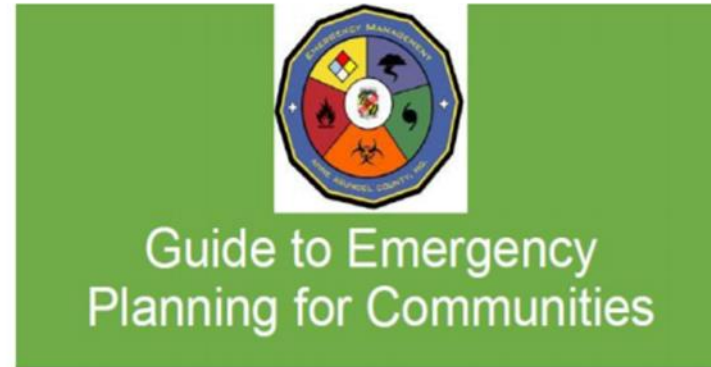
GET INVOLVED

- Get involved in your community...even during the pandemic!
- Ways to get involved include:
 - Request a virtual preparedness presentation for your community group
 - Get Community Emergency Response Team (CERT) Training
 - Volunteer for a community service activity
 - Safely keep a watchful eye on your neighbors
 - Set the example by observing COVID precautions
 - Set the example by being prepared!



COMMUNITY EMERGENCY PLAN

- Keep it simple
- Relevant to your community
- Practical
- Realistic
- Practice it !



FOR MORE INFORMATION

Anne Arundel County Office of Emergency Management

410-222-0600 oem@aacounty.org

www.aacounty.org/OEM Citizens Guide to Emergencies

Anne Arundel County Department of Health

410-222-7256 covid19info@aacounty.org

www.aahealth.org/covid19/ COVID-19 and You

Maryland Hurricane Evacuation Guide

<https://mema.maryland.gov/Documents/MDHurricaneEvacGuide.pdf>

National Weather Service: Hurricane Safety Tips

<https://www.weather.gov/safety/hurricane>

FEMA: Plan Ahead for All Disasters

<https://www.ready.gov/>

